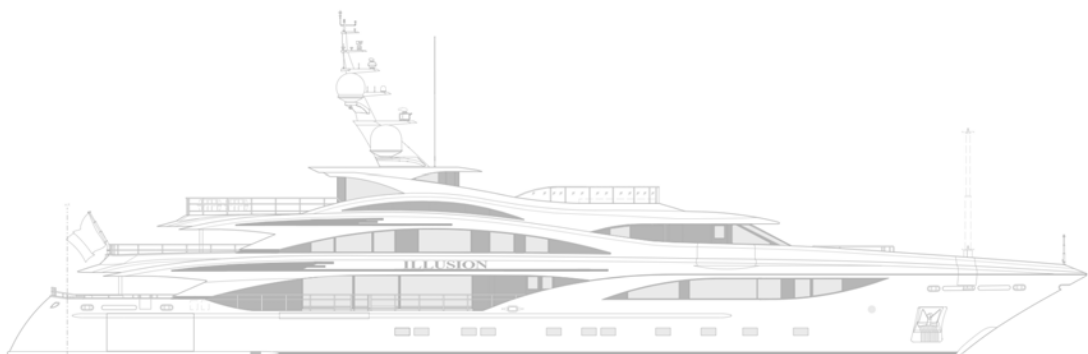


ILLUSION

*Tenders & Toys*



---

## **Contents**

3  
**Introduction**

4  
**Tenders**

5  
**Jetski**

5  
**Jetski Dock**

5  
**Seabob**

6  
**Jetovator & Flyboard**

7  
**Slide & Aquaglide**

8  
**Towables**

9  
**Wakeboard & Wakesurf**

10  
**Waterski**

11  
**SUP**

12-13  
**Dive, Snorkel & SNUBA**

14-15  
**Exercise**

16  
**Beach**

17  
**Fishing**

18  
**Table Tennis**

---

---

Welcome aboard!

The Illusion Toys & Tenders book is your guide to some of the activities, equipment and experiences available to you.

We pride ourselves on the ability to offer our guests a wide array of leisure options. Whether it's complete relaxation you're looking for, or something a little more adrenalin fueled, Illusion has it all.

The crew onboard have a wealth of experience in operating each piece of equipment in this guide, so if you're unsure, just let us know. We've included 'allowance times' in this guide - meaning the minimum time the vessel must be stationary to allow for a given activity to take place.

We wish you an enjoyable and memorable stay onboard.

*The Illusion Crew*

---

---

## **Novurania Chase Series 31**



### **Specifications**

Length: 31ft / 9.5m

Beam: 9ft / 3m

Engines: 2 x Yamaha  
F250

Passengers: 12 max

Cruising Speed: 40kn

Max Speed: 52kn

### ***Custom built 31ft Novurania Chase***

- Deep V performance hull.
- Plush leather and teak interior.
- Side boarding entrance.
- Fusion Stereo system with Ipod docking station.
- Reinforced towing pole.
- Swim ladder.
- Solid carbon bimini top.

## **Dariel DT7.5 Jet Tender**

### **Specifications**

Length: 24ft / 7.5m

Beam: 9ft / 3m

Engine: Castoldi Jet

Passengers: 12 max

Cruising Speed: 25kn

Max Speed: 40kn



### ***Jet Tender***

- Perfect for shallow water cruising and beaching with only 0.4 meter draft.
  - Sleek, low profile aesthetic.
  - Highly manoeuvrable, versatile tender.
-

## Jetski



### **SeaDoo RXP-X 260**

- 2 x Custom built performance spec SeaDoo Jetskis.
- 1,494 cc supercharged jet engines.
- iBR @ transmission with electronic brake, neutral and reverse.
- High performance electric VTS (Variable Trim System).
- Towing capability.
- 2 person rider capacity.

## **Accessories**



Full-face carbon helmets

Riding goggles & gloves

Learning key

*\* Guests may be required to show appropriate license.*

## **Jetski Dock**

The perfect mooring station for our 2 Jetskis. This floating, inflatable dock makes getting on/off the Jetskis accessible and hassle free. With its own side-boarding ladder, it makes a great swim platform too.



## **Seabob**



- 2 x Jet 5.12 ACS Seabobs
- E-Jet Power System controlled in 4 power levels.

A highly manoeuvrable personal water craft for use on the surface, or below. The Seabob has, since inception, been a favourite for all ages. At around 64kg/140lb, it is heavy to lift but once in the water is extremely buoyant. The Seabob requires little tuition, is safe to use and provides hours of fun.

## Jetovator & Flyboard



Taking yacht toys to a whole new level and a novelty to most, the Jetovator & Flyboard are a water sports accessory that extends the ability of an existing personal water craft. The Jetski, which provides the power, follows behind the Jetovator or Flyboard using the hose as a

tether. It is similar to other water sports accessories like wake boarding or water skiing except the accessory is actually towing the boat rather than the other way around. Loads of fun for those participating as well as providing entertainment for spectators.

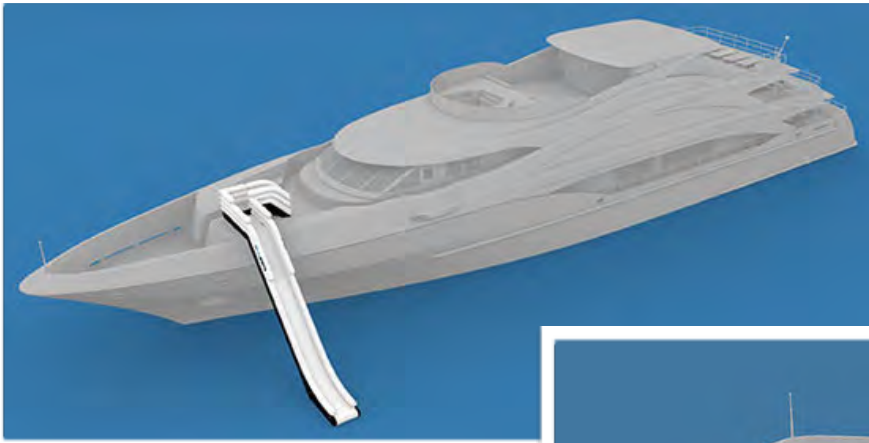


Let us know in ample time, or better yet, the night before, as modifications to the Jetski need to be installed and setup will take a considerable amount of time. Not to mention a safety briefing along with a few pointers.

-----  
Allowance Time  
5 hrs  
-----



## Slide



-----  
Allowance Time  
3 hrs  
-----

Launch yourself from the Bridge Deck, 6 metres down into the ocean below on our custom built inflatable slide, fitted specially for our port bow, AKA the Jump Zone.



## Aquaglide Airport Lounge & Splash Mat



The Aquaglide Airport Lounge makes a perfect platform for swimming, playing, or just relaxing. Comfortably fits 4 people.

Aquaglide's Splash Mat can be used as an extension to the Airport Lounge, or as a boarding walkway from boat to Lounge.

-----  
Allowance Time  
30 mins  
-----



---

## Towables

Slalom, jump and veer through the boat wake on the Slalom Solo, join the Air Force and take a ride on the classic American tube dubbed Air Force Flyer, discover why the Wet 'n' Wild Flyer gets its name, or challenge even the toughest wakes with the wide wing-span of the Chariot Warbirds 3. These toys offer hours of fun for all ages.

Allowance Time: 1 hr

### **Chariot Warbirds 3**



Riders: 3 max

### **Slalom Solo (x 2)**



Riders: 1 max

### **Air Force Flyer (x 2)**



Riders: 2 max

### **Wet 'n' Wild Flyer**



Riders: 4 max

---



---

## Wake Board & Wake Surf



### Wake

All our wakeboards and wake surfboards are top of the line models from Ronix, an acclaimed manufacturer from the U.S.

The “Time Bomb” is a slightly larger board suitable for adult or intermediate riders.

Our second wakeboard, the “Parks Bonifay” is a specialised board for the more experienced rider.



-----  
Allowance Time  
1 hr  
-----

### Skurf

Some of you may ask “what is a Wake Surf, or Skurfboard?”

As the name suggests, it’s a cross between a wakeboard and a surfboard, designed to ride on a specially made, short tow rope, in the larger wake area closer to the back of the boat. The free feeling of no boots & bindings, as well as a slower towing speed, make for an enjoyable, less strenuous ride. It’s a more stylish, laid back version of Wakeboarding.

You have a choice of two Skurfboards onboard. The first, a 5’1” tall performance thruster, has adjustable fin capabilities.

The other, a 4’10” skimmer boasts a looser ride and the option of riding switch.

Why not try both?



---

## Waterski



Designed as a versatile ski for use by the whole family, and also intended for use as a slalom ski, the O'Brien Performer Pro skis are fitted with metal fins for peak performance.

-----  
Allowance Time  
1 hr  
-----

Our O'Brien All Star Trainers feature a stabilizer bar to assist in balance and stability while learning to ski.

The Jr. Vortex skis feature the stability enhancing stabilizer bar to help beginner skiers. The next step up from the All Star Trainers, allowing the option of progressing to single skiing.



---

## SUP



The new Mana 10'0" Soft Top is an entry-level board designed for flat water and small surf. It features Naish's soft top/hard bottom construction. The embossed deck area provides superb grip and is exceptionally fall-friendly.

The ultra high density rails are extremely resilient and protect the board from paddle and rock dings. A single fin provides increased carving and manoeuvrability.

The full-carbon Kaholo paddle is incredibly light weight, offering great all-round wave riding and touring versatility. Easy length adjustment and perfect blade/handle alignment.



-----  
Allowance Time  
30 mins  
-----

---

---

## **Dive & Snorkel**

*PADI Open Water Diver's license (or equivalent) required for all divers.*

### ***Mares Dragon BCD***

The perfect system to dive with, incorporating the finest materials and technologies to make every dive enjoyable and safe.

- Quick release weight system makes dumping weights more efficient than ever.
- User-friendly Low Pressure Inflator system.
- Adjustable straps for a perfect fit and padded for extra comfort.



Our selection of Cressi, Mares and Scubapro Masks & Snorkels are superior in comfort and functionality.

- High-end silicon and tempered glass.
- Pair with our tangle-free head straps.
- Maximum visibility.

Mask & Snorkel available in children's sizes.



### ***Prestige 12S Regulator***

- Performance and reliability in compact and light second stage.
- Soft purge diaphragm with Mesh Grid.



### ***Mission Puck 3 Console***

- Computer, Compass and SPG in an ergonomic console.
  - Compact easy-to-read pressure gauge.
-



### **Mares Super Channel FF Fins**

Combine an extremely flexible and powerful blade with a soft and comfortable foot pocket to help propel you effortlessly through the water.

A range of Mares gloves, hoods and boots are available in different sizes for your convenience.



Light-weight, high quality Mares wetsuits in a range of sizes for men and women.

-----  
Allowance Time

Dive: 2 hrs

Snorkel: 30 mins

Snuba: 30 mins  
-----

## **SNUBA**

SNUBA allows you to explore the underwater world at greater depths than snorkeling. Breathing through a simple regulator while your air supply floats on the surface allows you to stay submerged for longer and explore with greater detail. Somewhere in between SCUBA diving and snorkeling, SNUBA requires no license or qualification to use.



---

## Exercise



### **Kettle Bells**

- Rubber covered Kettle Bells.
- 4kg, 8kg, 12kg, 16kg.



### **TRX**

- Suspension Training bodyweight exercise develops strength, balance, flexibility and core stability simultaneously.



### **Wellness Rack**

- Interchangeable dumbbell set.
- 8 x 2kg discs, 8 x 0.5kg discs.
- Easy-to-use system.



### **Weighted Jump Rope**

- 2 x 50g removable handle weights.
- 2.8m length.
- Adjustable rope.



### **Yoga Mat**

- Non-slip yoga mat.
- Cushions spine, hips, knees and elbows on hard floors.



### **1090 Dumbbells**

- Turn-dial weight selection - 10lbs to 90lbs (4.5kg/40.8kg).
  - The ultimate strength building weight set.
-



### ***Ergo S Spin Bike***

- Smartphone control via Bluetooth interface (use with S-Fit App).
- Multi-position handlebar with adjustable height.
- Gel seat adjustable horizontally and vertically.
- Gravity pedals with straps, castors and height adjustment.
- Pulse measurement: integrated POLAR compatible receiver for use with chest belt.

### ***Skylon S Elliptical Cross Trainer***

- Smartphone control via Bluetooth interface (use with S-Fit App).
- Height adjustable cockpit.
- Narrow gaps between foot plates for a more natural stance.
- Pulse measurement: hand sensors and integrated POLAR compatible receiver for use with chest belt.



---