



“

Sometimes you have to step off the beaten path, for the bigger rewards in life.

”



# Hemisphere - the world's largest sailing catamaran

Vast deck spaces, and luxurious, multi-award winning guest accommodation. Space to relax, and be sociable; spaces to retreat, and be intimate. A PADI certified dive centre, and a sportfisher's paradise. The most attentive service from a highly trained and multi-skilled crew. Hemisphere – an unforgettable charter experience.







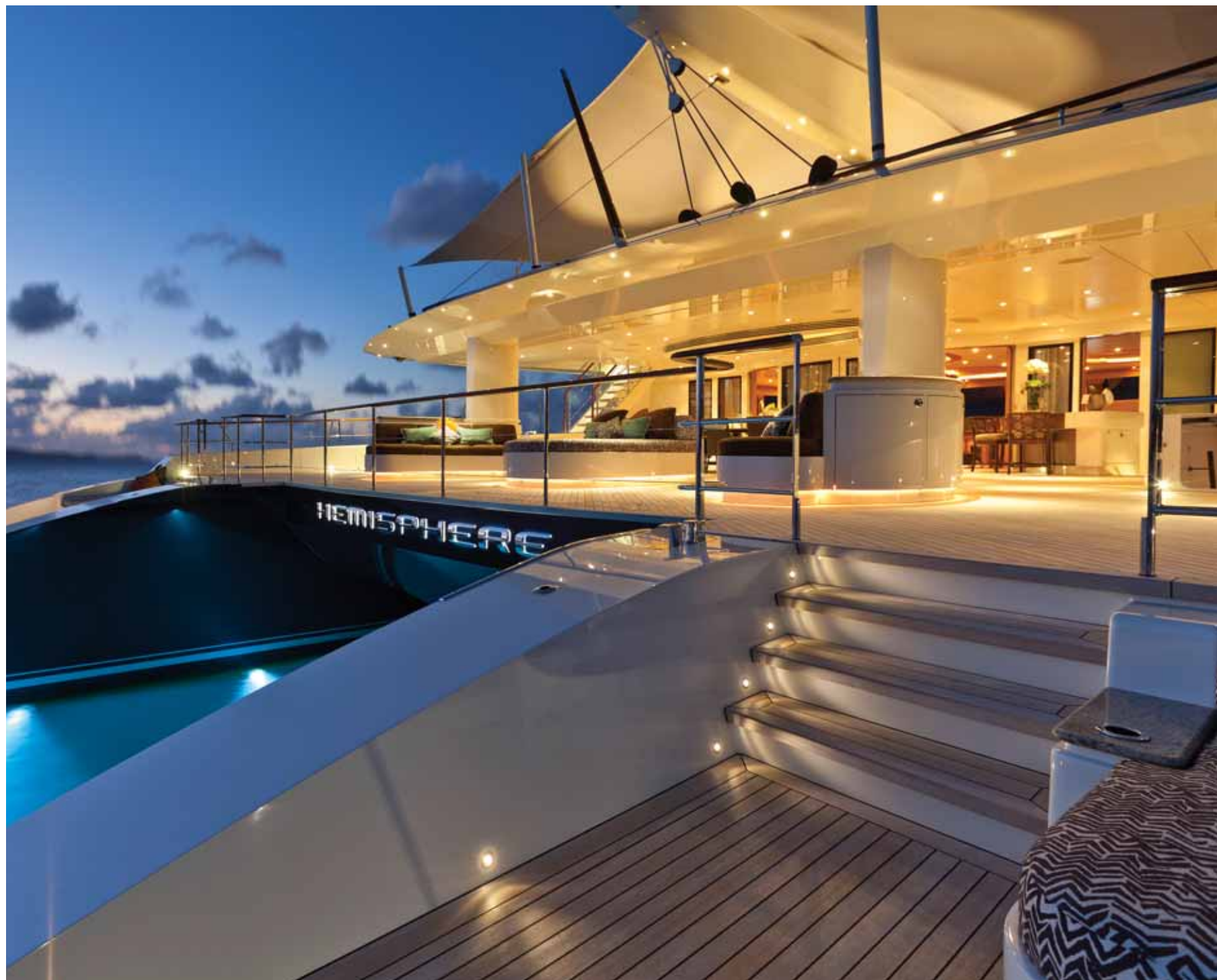


To step on board Hemisphere is to step on to your own private island. The extraordinary beam provides vast deck spaces offering every conceivable comfort, from alfresco dining to sunset bars, and from a spa pool with a view to direct access to the water.



Everything about Hemisphere  
is inviting, inside and out

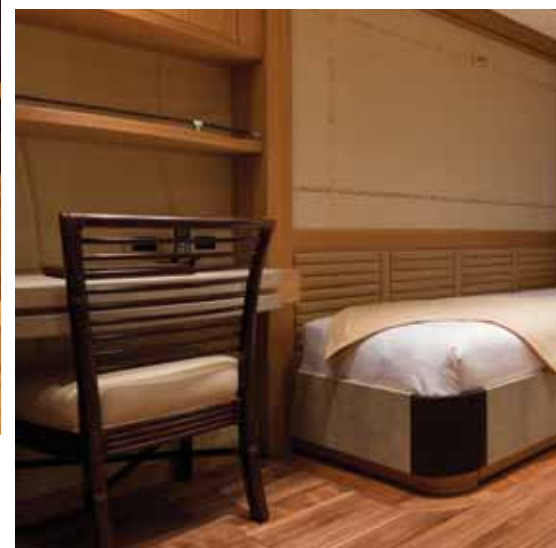




Bathed in light, warm in tone and completely unconventional, Hemisphere's interior and exterior spaces are typical of the yacht's general attitude: flowing and relaxed, social and informal.



The award-winning interior combines 18 types of leather and 15 different types of stone in a style attuned to Polynesian six-star luxury. From the vast saloon with its distinctive zones, to the cinema room and the highly individual guest suites, her sumptuous beach chic feel creates the ultimate retreat.









The inviting and contemporary guest cabins include two VIP suites on the main deck, each with access to the forward terrace. Perfect as individual suites, they can also be combined to create one immense master cabin.



Hemisphere is exquisitely detailed, yet retains that kick-off-your-shoes feel

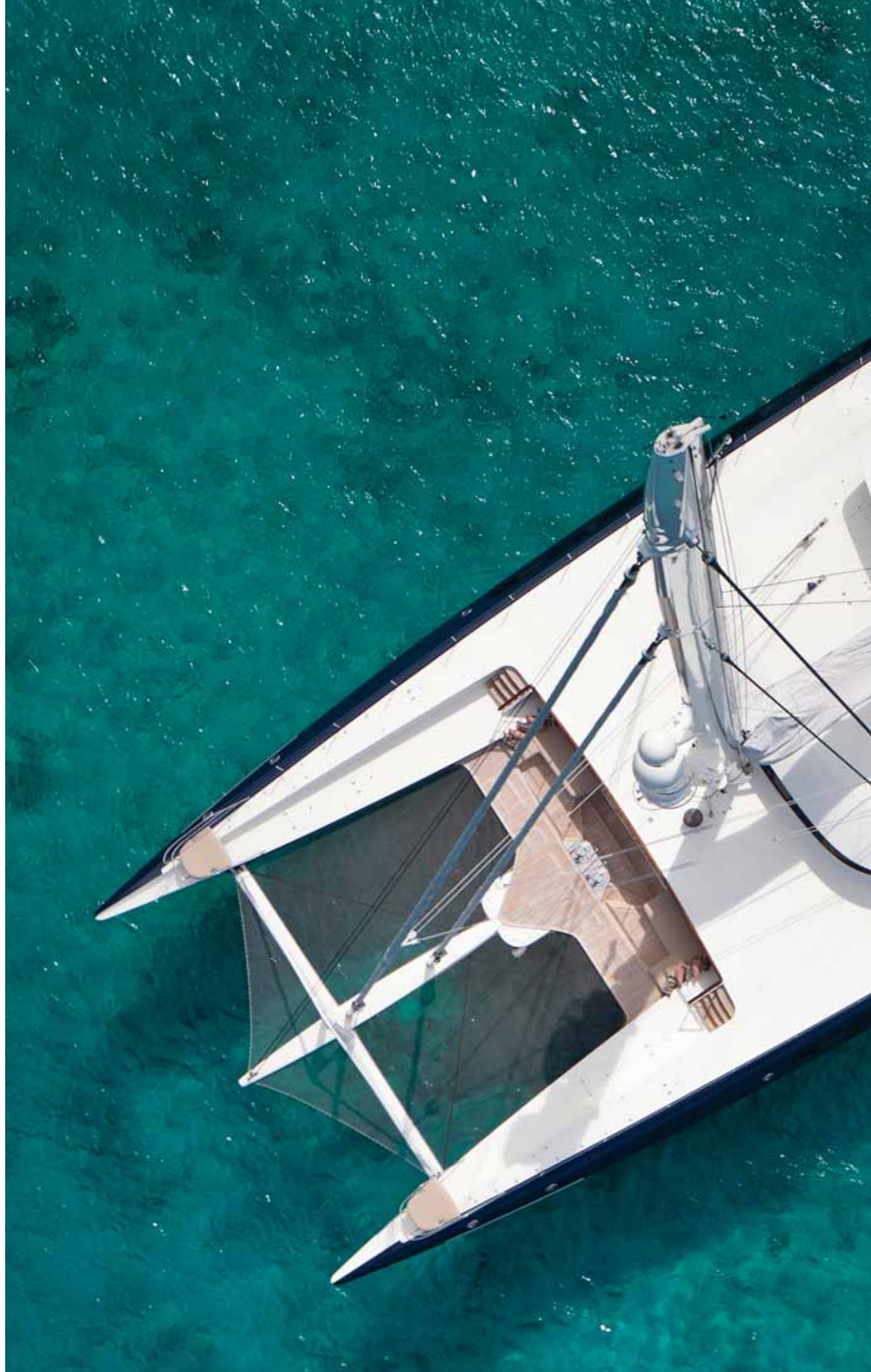


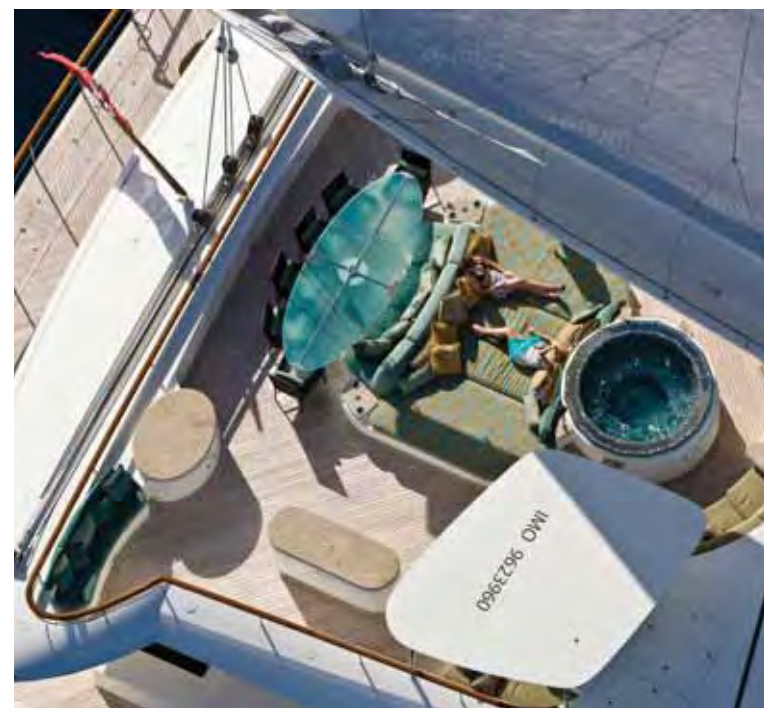
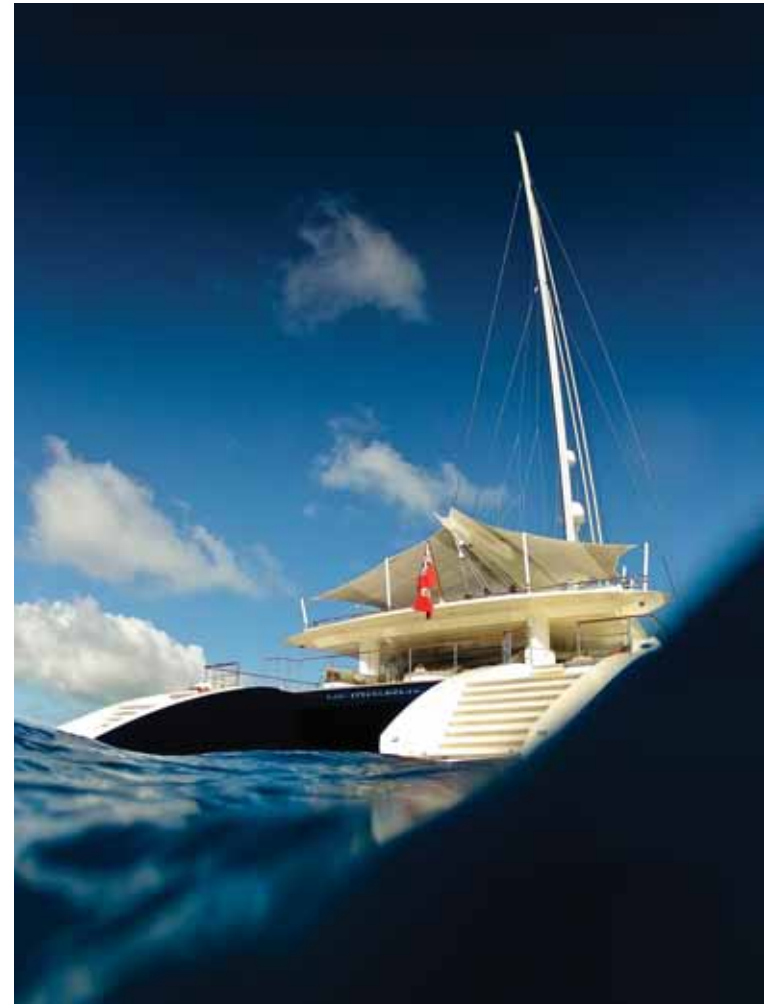
















Sensational views greet guests at every turn, not just from the exterior decks and the spectacular spa pool on the flying bridge, but also from the split-level saloon – 100 square metres of outstanding design that has a raised seating area offering a panorama of the ocean.

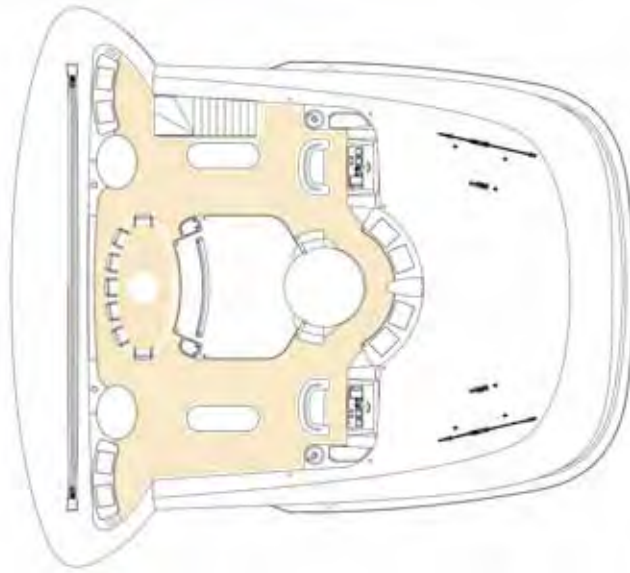




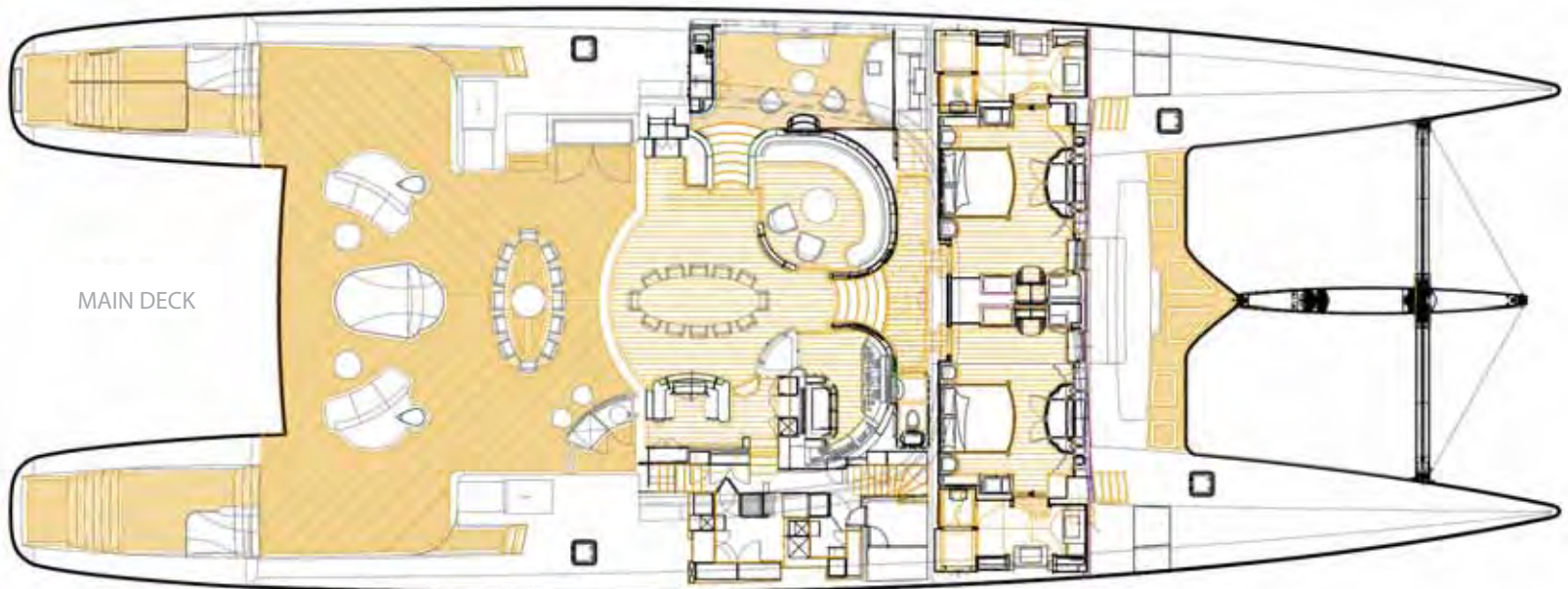


# Specifications

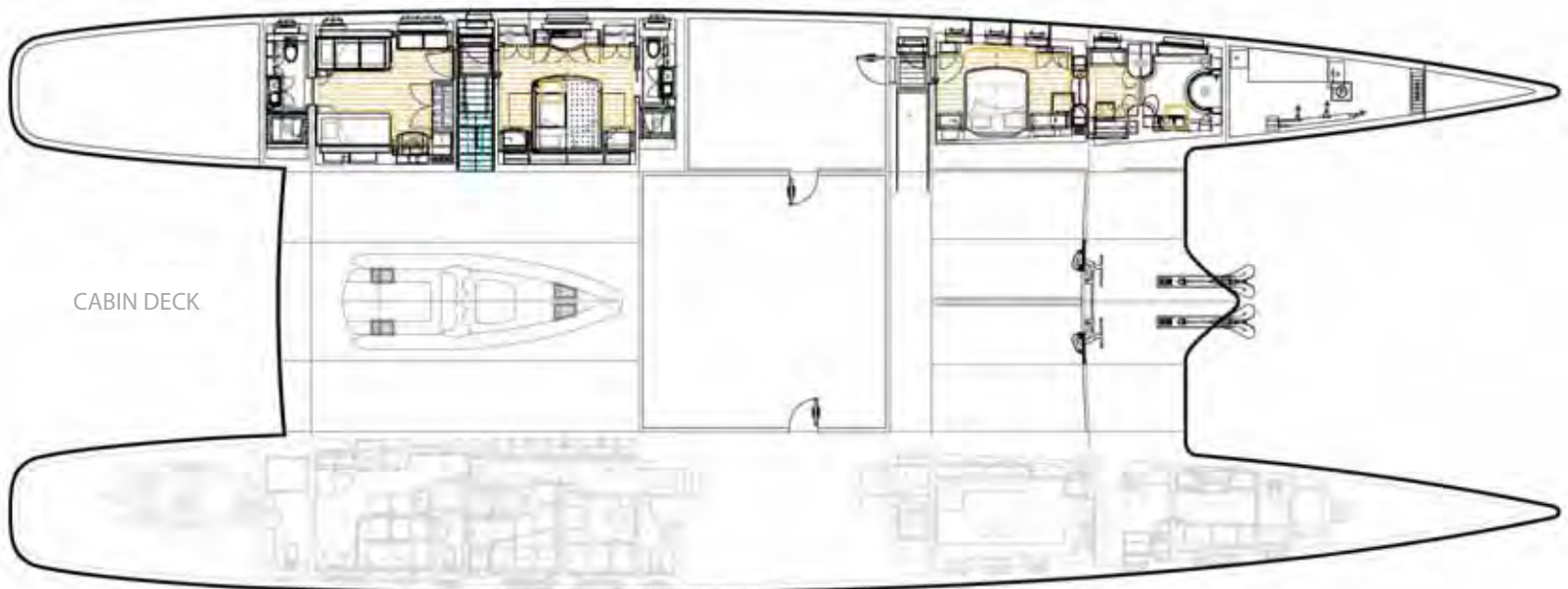
FLYBRIDGE



MAIN DECK



CABIN DECK



<b>Length</b>	44.2m (145ft)
<b>Beam</b>	16.6m (54ft)
<b>Draft</b>	3.2m (10ft)
<b>Built</b>	2011, Pendennis Shipyard Ltd, UK
<b>Engines</b>	2 x 490hp Caterpillar
<b>Cruising Speed</b>	11 knots under power
<b>Guests</b>	10/12 (2 VIPs, 2 double, 1 twin with pullmans)
<b>Crew</b>	8+2

### **Watersports**

- » 8.2m (27ft) Scorpion tender with Yamaha 315hp inboard
- » 4.5m (14ft) Castoldi jet tender with Yanmar 125hp
- » Full scuba diving facilities for 12 guests – nitrox air
- » Water skis – variety of sizes for adults and children
- » Wake boards and kneeboard
- » Paddle boards
- » 1m high 2.4m professional diving board
- » 4.8m (16ft) inflatable water trampoline
- » Kayaks
- » Windsurfing gear
- » Fishing gear (trolling, casting and fly)
- » Snorkelling gear
- » 5 x Water scooters
- » 4 x Mountain bikes (foldable)
- » 2 x Seabobs
- » Inflatable toys and tows

### **Communications and Entertainment**

- » Kaleidescape system with hundreds of movies
- » Wi-Fi and socket connections, full satcom and cellular communications facilities
- » VSAT and Fleet 77
- » Comprehensive audio-visual systems, satellite television, iPod docking stations and MP3 connections throughout the vessel. 61" plasma in lower salon, 42" plasma in VIPs and 32" LCD's in guest cabins

### **Special Features**

- » Spa pool
- » PADI certified training centre # S-23191
- » Two dive instructors onboard
- » Fully equipped dive room offering air and nitrox fills

### **Custom Sport Fishing Boat 'TT Hemisphere'**

- » 16.4m (54ft) F&S custom sport fishing boat for game fishing, diving and guest excursions
- » Fully equipped to tag and release large gamefish, or to bring something back for dinner









**Head Office/Australia**  
Luxury Charter Group Pty Limited  
PO Box 939, Main Beach  
QLD 4217, AUSTRALIA  
+61 (0) 459 303 221

**USA**  
1314 E Las Olas Blvd, Suite #1145  
Fort Lauderdale, FL 33301, USA  
**Office:** +1 954 495 4255  
**Fax:** +1 954 584 0027  
**GSM:** +1 954 448 9222

**Europe**  
**Office:** +33 184 884 395  
**Fax:** +33 184 885 370  
**GSM:** +48 506 124 796

[charter@luxurychartergroup.com](mailto:charter@luxurychartergroup.com)  
[www.luxurychartergroup.com](http://www.luxurychartergroup.com)