

---

Experience

MASTEKA 2

---



# S P E C I F I C A T I O N S

LENGTH  
37m / 122ft

GUESTS  
12

SLEEPS  
10-12

YEAR  
2009 / 2017

## BUILT

2009, Kha Shing. Refit 2017.

## BEAM | DRAFT

7.4m | 2.25m

## ACCOMMODATION

5 cabins (Master, 2x Double, 2x Twin, 2 x Pullman)

## GUESTS

Cruising: 12 | Sleeping: 10-12

## CREW

Captain + 5

## AUDIO VISUAL

iPod plugging stations, Flatscreen TVs throughout, Entertainment system with movie selection and music, Crestron touch panel control in Main Salon.

## WATERSPORTS

Custom Castoldi 16' 125 HP diesel jet, 34ft Boston Whaler conquest 345 (NC only)

Waterskis, Wakeboard, Inflatables, towable tubes and wing, Kneeboard

Snorkeling equipment all sizes, Fishing gear. Gym equipment. Bridge deck Jacuzzi.

Paddleboards, Kayaks - double and single, Diving hookah, subwing

## STABILISERS

Zero-speed stabilisers

## CRUISING SPEED

10 knots

## ENGINES

2x 1675hp (1232kW), Caterpillar C32























































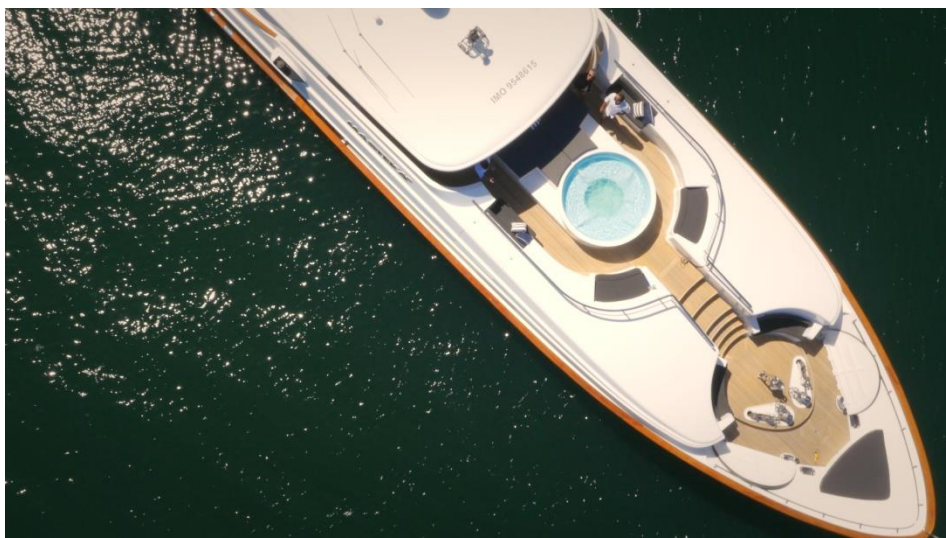
















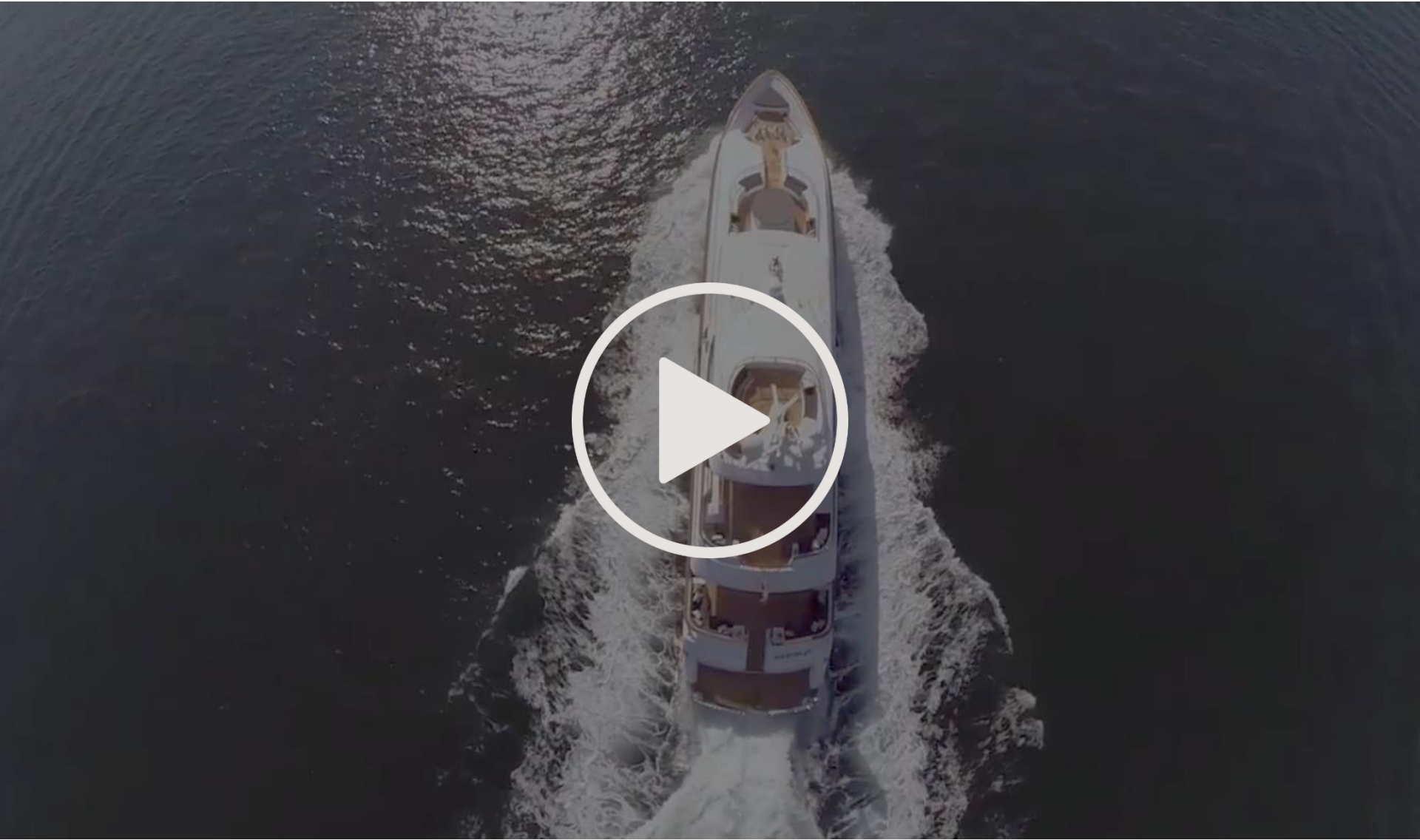








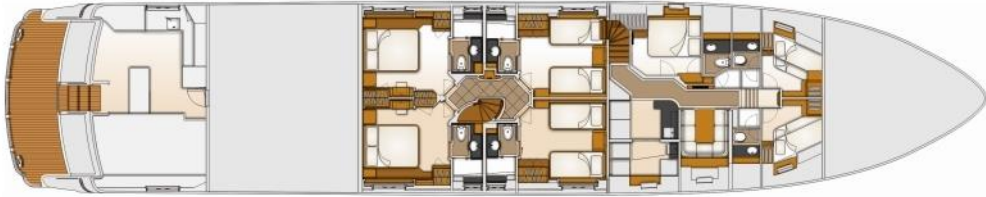
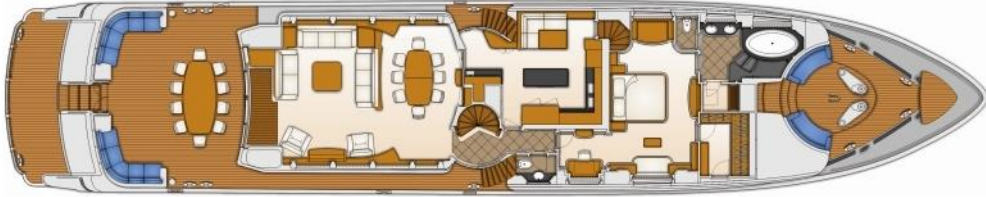
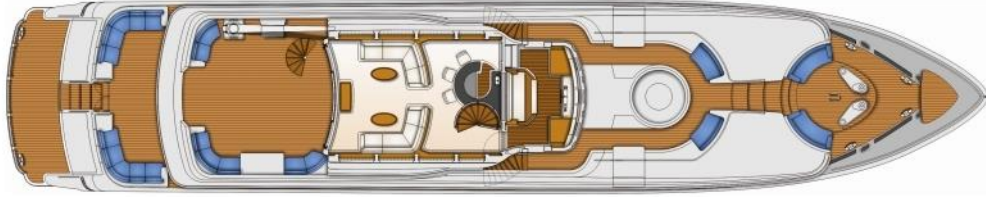
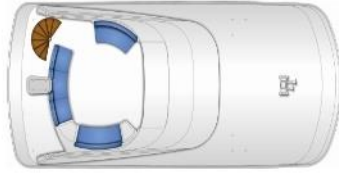




C L I C K T O V I S I T S Y D N E Y H A R B O U R



# MASTEKA<sup>2</sup>





# W H Y M A S T E R K A 2

---

LENGTH  
37m / 122ft

GUESTS  
12

SLEEPS  
10-12

YEAR  
2009

---

- Six years cruising Sydney Harbour, and the Islands of Fiji
- First foreign-flagged superyacht with a charter licence in New Caledonia
- Experienced Australian Captain Matt has cruised Sydney, Fiji and New Caledonia extensively
- 5 well-appointed cabins accommodate up to 12 guests in comfortable luxury
- Elegant classic interior design by British architect Dick Young
- Seaworthy enough to comfortably cruise long passages, compact enough to take guests right up close to all the hidden wonders of the Pacific and spacious enough to give each guest their own slice of paradise
- 8-person Jacuzzi on Bridge Deck level
- Extensive refit in 2016/17.



